

REHAB SEATING SOLUTIONS



BRODA[®]
REHAB WHEELCHAIRS

matrx[®]
SEATING SERIES

TABLE OF CONTENTS

<i>Tilt Wheelchairs Independent Users</i>	3
<i>Tilt Wheelchairs Caregiver-Dependent</i>	4-6
<i>Seating</i>	7-8
<i>Back Supports</i>	9-10
<i>Head Supports</i>	11
<i>Configure Your Rehab Wheelchair</i>	12



BRODA[®]

When it comes to rehabilitation care, the right wheelchair and seating can be the difference between a positive patient outcome and a poor one. Broda is committed to configuring chairs that are tailored to the needs of each individual user.

With tilt functionality, dynamic rocking functions, removable arm supports for easy side transfers, and a variety of available leg supports and accessory options, our rehab wheelchairs are ideal for many use cases.

matrx[®] SEATING SERIES

The Matrx[®] Seating Series from Motion Concepts is a simple and yet highly effective solution to meet the widest range of user needs. With the number of new seating and positioning products available today, it is only natural to choose the products you know best. As the landscape of seating changes, Matrx[®] stands out for its dedication to innovation, quality, and comfort.



Encore

Rehab Wheelchair

The Encore of Comfort,
Functionality, and Adjustability



RECOMENDED FOR:

More active users who can self propel with hands or feet.

SPECIFICATIONS

HCPCS Code	E1161, plus additional coded accessories
Degrees of Tilt	up to 33° (combined with rocking feature)
Weight Capacity	up to 250 lbs.
Seat Widths	16", 18", 20", 22"
Seat Depths	16", 17", 18", 19", 20"
Back Canes	16", 18", 21", 24" Angle adjustable to 5°, 10°, 15°, 20°
Seat Surface Heights	Adjustable 14" - 19"
Wheels - Casters	5" rear total lock 5" rear aluminum non-locking
Wheels - Mag Wheels	20" or 22" front mount



Chair shown with Matrix Libra cushion, Matrix Elite TR back, Matrix Elan headrest, and swing away lower leg supports. Frame in Carmine Red.

FEATURES



Swing away leg supports



Elevating leg supports



Folding back canes



Removable arm supports



Optional dynamic rocking

FRAME OPTIONS



Comfort

Rehab Wheelchair

Simplified Versatility and Durability

RECOMMENDED FOR:

Less active users who need more degrees of tilt for increased pressure relief.

SPECIFICATIONS

HCPCS Code	E1161, plus additional coded accessories
Degrees of Tilt	up to 45°
Weight Capacity	up to 250 lbs.
Seat Widths	16", 18", 20", 22"
Seat Depths	Adjustable 16" - 20"
Adjustable Back Angle	5°, 10°, 15°, 20°
Seat Surface Heights	Adjustable 14" - 19"
Wheels - Casters	5" rear total lock 5" rear aluminum non-locking
Wheels - Mag Wheels	20", 22", or 24" rear mount



Chair shown with Matrix Vi cushion, Matrix Elite deep back, and elevating lower leg supports. Frame in Zinc Yellow.

FEATURES



Swing-away leg supports



Elevating Leg supports



Infinitely-adjustable tilt

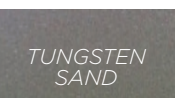
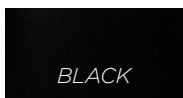


Removable arm supports



Adjustable back recline

FRAME OPTIONS



Synthesis

Rehab Wheelchair

Maximum comfort for recovery

RECOMMENDED FOR:

Caregiver-dependent users who need tilt and recline.

SPECIFICATIONS

HCPCS Code	E1161, plus additional coded accessories
Degrees of Tilt	up to 40°
Degrees of Recline	up to 90°
Weight Capacity	350 lbs.
Seat Widths	16", 18", 20", 22", 24", 26"
Seat Depths	17", 18.5", 20", 22"
Seat Surface Heights	19.5", 20.5", 22", 23.5"
Wheels - Mag Wheels	14", 20" rear mount mag wheels 14" mid mount mag wheels
Wheels - Caster Wheels	5" Front total lock or non-locking caster wheels 6" Rear multi-directional locking caster wheels



Chair shown with Matrix Libra cushion, Matrix Elite TR back, and swing away lower leg supports. Frame in Carmine Red.

FEATURES



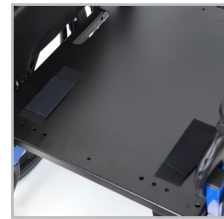
Tilt functionality provides additional pressure offloading



Front pivot seat tilt maintains a forward line of sight

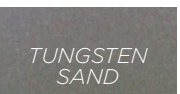


Adjustable upper lateral supports fit a variety of users



Solid seat pan provides support for a variety of cushions

FRAME OPTIONS



TILT WHEELCHAIRS

CAREGIVER DEPENDENT

RECOMMENDED FOR:

Less independent users who need more degrees of tilt and recline for increased pressure relief



Chair shown with Matrix PS cushion, pelvic positioning belt, and front caster options. Upholstery in Silvertex Sapphire.

Elite

Rehab Wheelchair

The Elite Rehab provides additional degrees of tilt and recline for advanced pressure redistribution and a higher level of comfortable care.

SPECIFICATIONS

HCPCS Code	E1161, plus additional coded accessories
Degrees of Tilt	up to 40°
Degrees of Recline	up to 15°
Weight Capacity	up to 350 lbs.
Seat Widths	16", 18", 20", 22", 24", 26", 28"
Seat Depths	17", 18.5", 20", 22"
Back Height	32", 33.5", 35"
Wheels - Casters	5" rear total lock 5" rear aluminum non-locking
Wheels - Mag Wheels	14", 20", 22" rear mount

Latitude

Rehab Wheelchair

The Latitude Rehab allows for smooth foot and hand propulsion and a unique dynamic rocking feature for mental contentment.

SPECIFICATIONS

HCPCS Code	E1161, plus additional coded accessories
Degrees of Tilt	up to 33° (combined with dynamic rocking)
Weight Capacity	up to 250 lbs.
Seat Widths	16", 18", 20", 22"
Seat Depths	15.5", 17", 18.5", and 20"
Back Height	32", 33.5", 35"
Seat Surface Heights	Adjustable 14" - 19"
Wheels - Casters	5" rear total lock 5" rear aluminum non-locking
Wheels - Mag Wheels	20", 22" front mount

RECOMMENDED FOR:

Less independent users who can self-propel with hands or feet.



Chair shown with Matrix PS cushion. Upholstery in Silvertex Sapphire.

matrix®

SEATING SERIES

Libra

Cushion



RECOMMENDED FOR:

Those at highest risk, with a history of or existing skin breakdown.

Cover - Moisture resistant Startex cover with zippered side pocket, lifting strap, slip resistant base and hook and loop fasteners for attachment to chair.

Liner - Moisture proof urethane slipcover

Fluid Sac - Non-temperature sensitive, no kneading or maintenance required. Three chamber design keeps fluid where it is required. Provides envelopment and shear protection to bony prominences.

Foam - HR (high resilient) molded foam made with UltraFresh antimicrobial for odor protection. Contoured pelvic well maintains level pelvis and helps prevent sliding. Waterfall front edge facilitates safe transfers. Molded in loop fabric for easy and secure attachment of Fit Kit accessories if required.

SPECIFICATIONS

	Standard Cushion	Heavy Duty Cushion
Weight Capacity	300 lbs.	600 lbs
Widths	16", 18", 20"	22", 24"
Depths	16", 18", 20"	18", 20"
HCPCS	E624	E265

Vi

Cushion



RECOMMENDED FOR:

Those at moderate-to-high risk of skin breakdown.

Cover - Moisture resistant Meshtex™ cover includes lifting strap, slip resistant base, hook and loop fasteners for attachment to chair.

Liner - Wipeable, moisture resistant Startex.

Top layer - Molded HR (high resilient) foam made with UltraFresh antimicrobial for odor protection. Contoured for midline leg position and waterfall undercut to facilitate safe transfers.

Ischial insert - Supersoft viscoelastic foam insert for envelopment and protection of bony prominences.

Bottom Layer - Firm HR foam base provides stability and protection against bottoming out.

SPECIFICATIONS

	Standard Cushion	Heavy Duty Cushion
Weight Capacity	300 lbs.	600 lbs
Widths	16", 18", 20"	24"
Depths	16", 18", 20"	18", 20"
HCPCS	E2607	E2608

For convenience, all seating options ship on chair.

PSP

Cushion



RECOMMENDED FOR:

Those at moderate-to-high risk of skin breakdown.

Cover - Reversible, moisture resistant Startex cover can be used fabric or wipeable side out. Hook and loop fasteners for attachment to chair.

Liner - Wipeable, moisture resistant Startex.

Polymer Insert - Molded-in polymer gel provides extra skin protection and shear reduction

Foam - HR (high resilient) molded foam made with UltraFresh antimicrobial for odor protection. Waffled ischial relief area immerses pelvis and helps prevent sliding. Waterfall front edge to facilitate safe transfers.

SPECIFICATIONS

	Standard Cushion
Weight Capacity	300 lbs.
Widths	16", 18", 20"
Depths	16", 18", 20"
HCPCS	E2607

PS

Cushion



RECOMMENDED FOR:

Those at low-to-moderate risk of skin breakdown.

Cover - Moisture resistant Startex cover with zippered side pocket, lifting strap, slip resistant base and hook and loop fasteners for attachment to chair.

Liner - Moisture proof urethane slipcover

Foam - HR (high resilient) molded foam made with UltraFresh antimicrobial for odor protection. Contoured pelvic well maintains level pelvis and helps prevent sliding. Waterfall front edge facilitates safe transfers. Molded in loop fabric for easy and secure attachment of Fit Kit accessories if required.

Ischial relief area - Waffled ischial relief area immerses pelvis and helps prevent sliding.

SPECIFICATIONS

	Standard Cushion	Heavy Duty Cushion
Weight Capacity	300 lbs.	600 lbs.
Widths	16", 18", 20"	22", 24", 26"
Depths	16", 18", 20"	18", 20"
HCPCS	E2605	E2606

matrix®

SEATING SERIES

Easy Set Hardware

Included on all backs



ROTATION

Back may be oriented to accommodate pelvic/trunk rotation



ANGLE

20° posterior/anterior range of back angle adjustment in front of back canes



DEPTH

Adjusts 2" behind back canes



DEPTH

Adjusts 2" in front of back canes

E2™

Back Supports



RECOMMENDED FOR:

All wheelchair users and suppliers looking for the best in back comfort, adjustability and support.

Shell - Designed for superior support and functionality with accessory openings and notched sacral cutout.

Foam - Contoured ripple foam with airflow channels creates extra immersion, temperature control, and shear reduction.

Cover - Meshtex™ outer cover is moisture resistant and breathable providing airflow, comfort, and protection.

Hardware - Easysset height and width increased adjustability makes it effortless to fit and adjust wheelchair sizes now including more incremental widths.

SPECIFICATIONS

	Standard Back	Heavy Duty Back
Weight Capacity	300 lbs.	500 lbs.
Widths	14", 15", 16", 17", 18", 19", 20"	22", 24"
Heights	12", 14", 16", 18", 20"	20"
Contour Depth	3"	6"
HCPCS Code	E2615	E2620

BACK SUPPORTS

For convenience, all back options ship on chair.

Elite (TR/Deep)

Back Supports



RECOMMENDED FOR:

Active users who want shoulder or hip clearance, or the ability to use add-on lateral supports Compatible with Encore Rehab and Comfort Rehab.

Shell - Contoured aluminum with cutouts for lifting and breathability. Available in standard (3") OR deep (6") contours.

Foam - HR (high resilient) foam enclosed in cover

Cover - Meshtex™ moisture resistant cover with foam overlaps the shell to provide comfort and protection.

Hardware - Easy adjustment of height/depth/angle and rotation for optimal positioning. Quick release for portability.

SPECIFICATIONS

	Standard Back	Heavy Duty Back
Weight Capacity	300 lbs.	500 lbs.
Widths	16", 18", 20"	22", 24", 26"
Heights	16", 18", 20"	16", 18", 20"
Contour Depth	3"	6"
HCPCS Code	E2620	E2621

PB/PB Deep

Back Supports



RECOMMENDED FOR:

Less active users who want exceptional comfort and a gently contoured shape

Shell - Lightweight ABS shell available in standard (5") or deep (7") contour depths

Foam - Molded HR (high resilient) foam made with UltraFresh antimicrobial for odor protection.

Cover - Attractive, moisture resistant Meshtex™ upholstered cover.

Hardware - Easy adjustment of height/depth/angle and rotation for optimal positioning. Quick release for portability.

SPECIFICATIONS

	Standard Back
Weight Capacity	300 lbs .
Widths	16", 20"
Heights	16", 18", 20"
Contour Depth	5", 7"
HCPCS Code	E2615

matrix®

SEATING SERIES

Loxx & Elan

Head Supports



Loxx



Elan

HARDWARE



Highly-adjustable
HCPCS E0128

FEATURES



Tool-less Adjustment levers



Ergonomic Adjustment Knob

OPTIONS



Standard Pad
HCPCS E0955

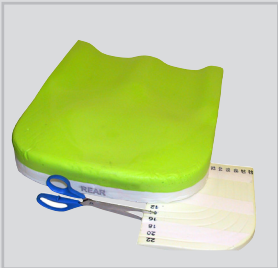


4-point Pad
HCPCS E0955

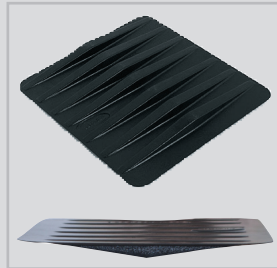


4-point Pad with
Headband
HCPCS E0955

SEATING ACCESSORIES



**PELVIC
OBLIQUITY KIT**
Designed to
accommodate up to
1" obliquities.



**CUSHION
RIGIDIZER**
Level support that
eliminates hammock
effect of sling seat
upholstery. Securely
fitted to bottom of
foam cushion inside
the cushion cover.

HCPCS E0992

LIBRA CUSHION OPTIONS

- Anterior Seat Wedge
- Hemi Wedge
- Libra Fluid Supplement
- Libra Abductor
- Tapered Wedges



BACK ACCESSORIES



FIXED LATERALS
Height adjustable,
installed inside back
shell.

HCPCS E0956



**SWING-AWAY
LATERALS**
Height adjustable,
installed inside back
shell.

HCPCS E0128



PRIVACY FLAP
Fits widths S 16", M
18", L 20", XL 22",
XXL 24"

Configure Your Rehab Chair

More Independent  Less Independent

Step 1: Select Chair Frame

BRODA



Encore Rehab Wheelchair



Latitude Rehab Wheelchair



Comfort Rehab Wheelchair



Synthesis Rehab Wheelchair



Elite Rehab Wheelchair

250 lbs. weight capacity Up to 33° Tilt Dynamic Rocking HCPCS E1161	250 lbs. weight capacity Up to 33° Tilt Dynamic Rocking HCPCS E1161	250 lbs. weight capacity Up to 45° Tilt Highly Adjustable HCPCS E1161	350 lbs. weight capacity Up to 40° Tilt Up to 90° Recline HCPCS E1161	350 lbs. weight capacity Up to 40° Tilt Up to 15° Recline HCPCS E1161
--	--	--	--	--

All Matrix options ship pre-installed on your Broda wheelchair.

Step 2: Select Seating

matrix
SEATING SERIES

More Pressure Reduction



Libra Cushion



Vi Cushion



PSP Cushion

Less Pressure Reduction



PS Cushion

Encore Rehab or Comfort Rehab

Latitude Rehab or Elite Rehab

Step 3: Select Back Support

matrix
SEATING SERIES

More Supportive



E2™ Backs

HCPCS E2620/E2621



Elite (TR/Deep) Backs

HCPCS E2620/E2621

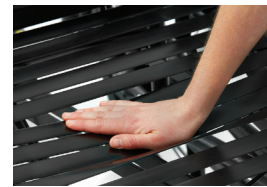
Less Supportive



PB & PB Deep Backs

HCPCS E2615

BRODA



*Comfort Tension Seating®
Additional Positioning Padding (APP)
Slim Posture Padding (SPP)*

HCPCS E2601/E2611

Encore Rehab or Comfort Rehab

Step 4: Select Head Support

matrix
SEATING SERIES

More Supportive



*Loxx Head Support
HCPCS E0955/E1028*

Less Supportive




*Elan Head Support
HCPCS E0955/E1028*

Step 3: Select Additional Accessories

*Call us for more options!
1-844-552-7632*

HCPCS codes supplied are for reference only and do not ensure coverage or payment. The HCPCS provided are based on our interpretation of the code definitions. HCPCS codes are not intended to be, nor should be considered billing or legal advice. Providers are responsible for determining the appropriate billing codes when submitting claims to the Medicare Program and should consult an attorney or other advisor to discuss specific situations in further detail.



brodaseating.com

Broda USA
15455 Conway Rd, Suite 200
Chesterfield, MO 63017, USA

Broda Canada
560 Bingemans Centre Dr
Kitchener, ON N2B 3X9, Canada

BRODA[®]

matrix[®]
SEATING SERIES